



Hear what you're missing

Movies, Bluetooth music and gaming like you've never heard them before. Take your home entertainment to a new level with DALI KATCH ONE, our first dedicated TV soundbar.

KATCH ONETM

RAISE THE SOUNDBAR



Upgrade your audio

TV sound just got real with the DALI KATCH ONE...

As TVs get larger and larger, the space for quality audio systems gets smaller and smaller. With slim profiles in vogue, audio performance is the first to suffer.

Fortunately, for viewers that demand the sound from their TV is just as sharp as the picture, DALI has created the KATCH ONE – a complete, simple to install, stylish, one-box soundbar that upgrades TV audio by adding that missing audio excellence.

Featuring a chic, compact design, the DALI KATCH ONE features no fewer than 10 built-in drivers, perfectly matched with a powerful 4x 50W amplifier, ensuring that movie soundtracks are always sweepingly dynamic, that dialogue is always crisp and clear, and music is beautifully balanced and exactly as the creator intended.

With soft dome tweeters keeping sound clean and detailed, four large

passive drivers work alongside four active woofers to deliver bass that's tight, punchy and precise, all combining to providing the perfect audio experience.

Elegant and easy to install, the DALI KATCH ONE comes with all the inputs you could ever need, including HDMI, 2x Optical, Analogue, not to mention Bluetooth (AAC and aptX).

Designed to enhance TV audio but engineered to improve music from any source, the DALI KATCH ONE has the power to perform as your main audio system.

That faultless audio performance is testament to DALI's nearly four-decade long experience in high-end hi-fi production, focusing on creating the most natural-sounding speakers on the market, recreating music just as the artist intended.

Elegant and easy to install, the **DALI KATCH ONE** comes with all the inputs you could ever need



The **KATCH ONE** can be controlled using either the included remote, or with your TV remote, while Bluetooth allows music to be played wirelessly from phones and tablets.

With 10 built-in drivers, the **DALI KATCH ONE** doesn't just look the part, it sounds it, too.

Designed for life

When conceiving the **KATCH ONE**, DALI wanted to truly understand what people wanted from a soundbar, so they asked them. This invaluable insight means that the KATCH ONE is like no soundbar before it. The KATCH ONE is available in Iron Black, Mountain White and Ivory White and comes complete with a leather strap wall mount (one of three mounting options).

Effortlessly stylish, the KATCH ONE's cable management system keeps everything tidy, while the fabric front's excellent acoustic properties ensure no audio detail is lost.

Undeniably elegant when wall-mounted with the leather strap, the KATCH ONE is equally at home sat on a shelf or on top of furniture, thanks to the supplied real wood feet. Or – should space be an issue – the KATCH ONE can be mounted in close proximity to the TV using the keyhole mount on the rear.

ENGINEERING EXCELLENCE

Keeping the KATCH ONE compact meant having to think outside the box. As such, the speaker's casing and front baffle are moulded from a glass

fibre-reinforced ABS compound which optimises airflow across the drivers, widening the stereo image and directing the sound straight at the listener.

Should physical controls be required, they can be found hidden in a slight depression on the top of the cabinet, from where every function of the KATCH ONE can be controlled.

All inputs and outputs can be found on the rear in a connection bay that hides the plugs from view and gives easy access to the cable management system.



KATCH ONE is like no soundbar before it



Placing the KATCH ONE on a shelf or on furniture is possible with the supplied real wood feet.



Where space under the TV allows, the leather strap mounting solution completes the look and feel of the KATCH ONE.

Driven to better

Building on the ground-breaking designs of the KUBIK ONE and the KATCH, DALI already had the essential elements required to create the KATCH ONE, including a cabinet that's compact yet still manages to house four active woofers, large passive membranes to aid bass response, plus ultra-lightweight soft dome tweeters.

BRING THE BASS

Utilising a specially designed chassis, innovative spider suspension and an inverted membrane, the DALI KATCH ONE's bass/mid-range achieves the same maximum excursion as a traditional woofer, despite its shallow design. As with the tweeter size, every extra millimetre of internal depth gained is turned into true low frequency reproduction, while the stiff aluminium cone allows the woofer to move as much air as possible, the combination of aluminium and fabric working to lower surface resonances. The result is detail, clarity and truly deep, precision bass.

PUMP IT UP

Packing a Class-D 4 x 50W closed loop amplifier that come directly connected to the tweeters and woofers to maximise performance, the KATCH ONE has ample power to handle anything you can throw at it.

SOFT DOME SMARTS

Compact yet commanding, the 21mm ultra-lightweight soft dome tweeter is based on a powerful neodymium magnet. Featuring a relatively large membrane area, the diminutive tweeter size allows for a more capacious inner cabinet volume, while the surface area guarantees precise a mid-range with detail and speed.

POWER & CONTROL

Picked for its high processing power and flexibility, the KATCH ONE's DSP can deftly control all six woofers, retaining enough processing performance to step in before amp or drivers become over-extended, ensuring exceptional audio at all times.

DALI KATCH ONE tweeter delivers unerring accuracy and beautifully refined detail at all volumes.

TWEETERS

The cunningly large surface area of the ultra-lightweight soft dome tweeter ensures that it can reach deep into the mid-range frequency areas without suffering any break up or drops offs. Integrating seamlessly with the woofer, the DALI KATCH ONE tweeter delivers unerring accuracy and beautifully refined detail at all volumes.

Elegant and easy to install, the DALI KATCH ONE comes with all the inputs you could ever need, including HDMI, 2x Optical, Analogue, not to mention Bluetooth (AAC and aptX).

The **KATCH ONE** has ample power to handle anything you can throw at it.

WOOFERS

Featuring an innovative outward-turned cone made from an aluminium membrane with a soft fabric dust cap, the stiff aluminium cone allows the woofer to move as much air about as possible, even at mid-range frequencies. Meanwhile the combination of aluminium and fabric reduces surface resonances, effectively eliminating colouration and distortion.

The rear woofers are designed to integrate with the wall to expand the bass performance, also utilising the wall to widen the stereo image.

Keyhole mounts on the rear of the **KATCH ONE** allow for wall-mounting close to the TV where space is tight.

TECHNICAL SPECIFICATIONS

Frequency Range (+/-3 dB) [Hz]
46 - 25,000

Maximum SPL [dB]
101

Crossover Frequency [Hz]
250 / 2500

Crossover Principle
2½-way

High Frequency Driver
2 x 21 mm Soft Textile Dome

Low Frequency Driver
4 x 3.5" Aluminium Cone With Textile Cap

Low Frequency Passive Driver
4 x 4.5" Steel Cone

Enclosure Type
Passive Radiators (4 pcs)

Max. Amplifier Power Output [Watt]
4 x 50

Connection Input(s)
HDMI ARC
2 x optical / Toslink
3.5mm mini jack Stereo

Wireless Input(s)
Bluetooth™ 4.0 AAC & aptX

Connection output(s)
Sub Out
USB Charge (5V/1A)

Amplifier Type
Fully Digital Class-D amplifiers

Recommended Placement
Wall ▪ Table close to wall

Functions
Dual Sound Mode (Wide/Focus) ▪
Auto Source Select ▪ Standby (Auto
Power) Off ▪ Mute ▪ Power On/Off
Volume ▪ Source Select ▪ Bluetooth Release

Standby Power Consumption [W]
0.5 (Mains Adapter)

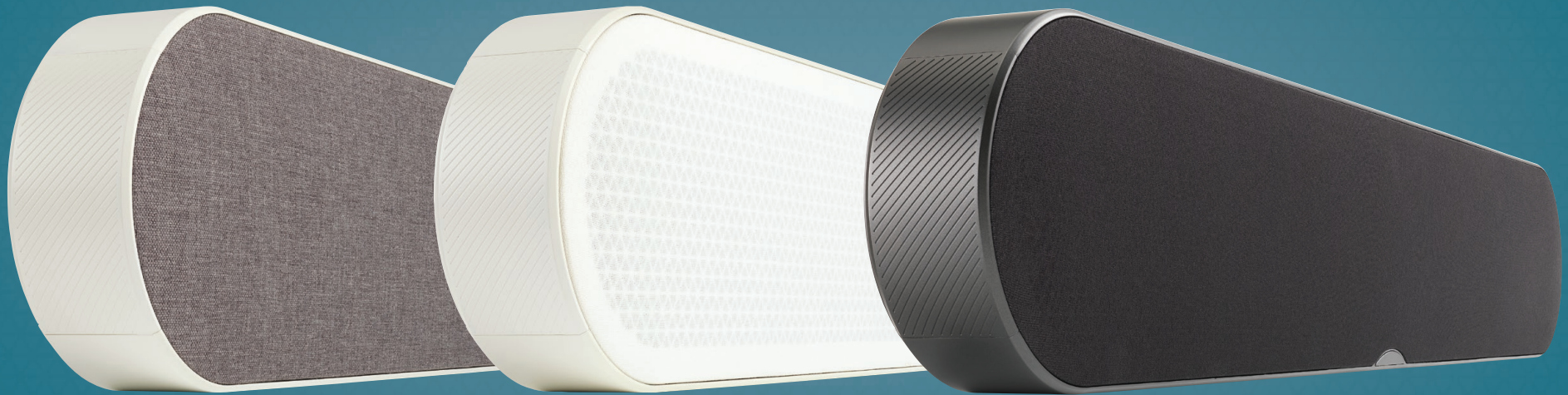
Dimensions (HxWxD) [mm]
164 x 860 x 69 / 6.5 x 33.9 x 2.7 inches

Accessories Included
Wall bracket (Leather mount) ▪ Feet (Solid
wood) ▪ Remote Control ▪ Mains Cable (2m
wire length) ▪ Quick Start Guide

Finish
Iron Black ▪ Ivory White ▪ Mountain White

KATCH ONE™

RAISE THE SOUNDBAR



IN ADMIRATION OF MUSIC